

The background of the image is a soft, painterly texture in shades of pink and lavender. It is adorned with several large, detailed flowers. In the top left, there is a large purple flower with a dark center. In the top right, a deep red flower is partially visible. On the right side, another large purple flower is shown. In the bottom left, a large, pale pink flower with delicate petals is prominent. At the bottom center, there are two smaller, dark purple flowers with golden-brown centers. In the bottom right, a deep red flower is also visible. The overall aesthetic is romantic and elegant.

# Wilma's DESSERT MENU

*Nostalgic dessert from the GDR:*

But how did it get its name  
“Swedish Sundae”?

During the Winter Olympics in 1952,  
the (former) West German ice hockey team  
lost against the Swedish team. Out of pure  
schadenfreude about their loss, the GDR  
politician Walter Ulbricht is said to have  
called his preferred ice cream sundae  
“Swedish Sundae” thereafter.



# Swedish Sundae

Homemade apple ragout | Vanilla-oat ice cream 🍷 | Homemade egg liqueur\* | Cream  
Chocolate sauce | Ulmer grated chocolate | Oat cookie

8,50

*\*Wilma's egg liqueur*

Stirred by Wilma herself:  
Eggs, real Bourbon vanilla,  
sugar, vodka and grain alcohol.  
That's how Wilma likes it.



# Caribbean Charm 🌿

Oat yoghurt | Pineapple-mint ice cream 🌿 | Pineapple pieces | Dried coconut pieces

8,50

Add 2cl of Captain Morgan rum

+ 2,50







*Wilma buys regional  
and seasonal whenever  
it's possible!*

Therefore, she only serves  
this sundae as long as there  
are fresh and regional  
strawberries.

# Strawberry Miracle 🌿

Vanilla-oat ice cream 🌿 | Oat yoghurt | Fresh strawberries  
Strawberry sauce | Muesli crunch

8,50

# Sundae of Happiness

Chocolate ice cream | Fresh banana pieces | Cream  
Salty caramel sauce | Chocolate sauce | Ulmer grated chocolate | Oat cookie

8,50







# Sacher Torte

Chocolate ice cream | Hazelnut ice cream | Cream | Apricot cream  
Chocolate sauce | Chocolate cake cubes | Oat cookie

8,50

# Nutcracker

Hazelnut ice cream | Homemade apple ragout | Natural yoghurt  
Salty caramel sauce | Cream | Walnuts | Oat cookie

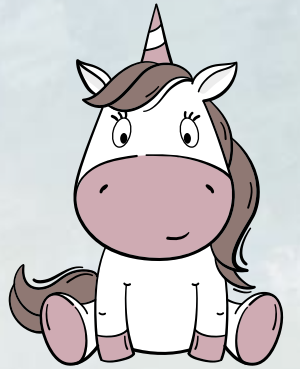
8,50







# Ice Circus



Croissant | Ice cream | Cream | Chocolate sauce | Unicorn sprinkles

Wilma's ice circus is available with a scoop of vanilla-oat 🌱, chocolate ice cream or strawberry sorbet 🌱.

6,50



# Iced Coffee

Cold brew coffee | Vanilla-oat ice cream 🍷 | Cream | Oat cookie

8,00

# Iced Chocolate

Cacao | Milk | Chocolate and vanilla-oat ice cream 🍷 | Cream | Oat cookie

8,00

Add 2cl of Wilma's delicious  
homemade egg liqueur\*

+ 3,50

*\*Wilma's egg liqueur*

Stirred by Wilma herself:  
Eggs, real Bourbon vanilla,  
sugar, vodka and grain alcohol.  
That's how Wilma likes it.





# Wilma's soft Skillet Cookie

Cookie dough | Chocolate chips | Vanilla-oat ice cream 🌿

11,50



# Crookie

Flat baked croissant with cookie dough | Chopped pistachios  
Pistachio cream | Vanilla-oat ice cream 🌿

11,50

# Yoghurt Heaven 🌿

Oat yoghurt | Exotic fruit sauce consisting of pineapple,  
strawberry and coconut milk | Muesli crunch

8,50





# Wilma's Cake Dreams

Wilma's delicious cake creations are a true insider tip for gourmets!  
Each day, Wilma will surprise and pamper you with her unique creations.  
Available for takeout, too!





WILMA  
WUNDER

ESSEN  
TRINKEN

*Wilma's ice cream*

Our ice cream is from  
the manufactory  
Gimme Gelato in Berlin -  
traditional craft that  
focuses on the  
best flavour.

There's always room  
for ice cream.

🌱 = vegetarian

🌿 = vegan

You can find information about additives and allergens in our separate chart.  
Just ask the service staff.

All prices in Euro including legal VAT and service charge.

© Wilma Wunder 2025 - Duesseldorf